

SAMPLE VIEW

PART INFORMATION		
DESCRIPTION	QTY	APPROX. WEIGHT IN LBS
CP-188x92	120	1,190

NOTES: UNLESS OTHER WISE SPECIFIED

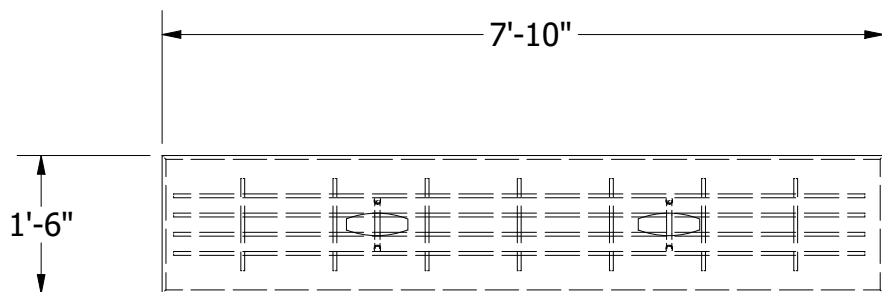
1. CONCRETE SHALL HAVE A MINIMUM COMPRESSIVE STRENGTH $F_c=5000$ PSI AT 28 DAYS.
2. THE PORTLAND CEMENT USED IN THE PRECAST SECTIONS SHALL MEET THE REQUIREMENTS OF TYPE II/IV HIGH SULFATE RESISTANCE CEMENT IN ACCORDANCE WITH ASTM C-150.
3. CONTRACTOR TO DRILL ALL CONNECTIONS AND SUPPLY ANCHORS TO SECURE.

REVISIONS:
No. DATE DESCRIPTION

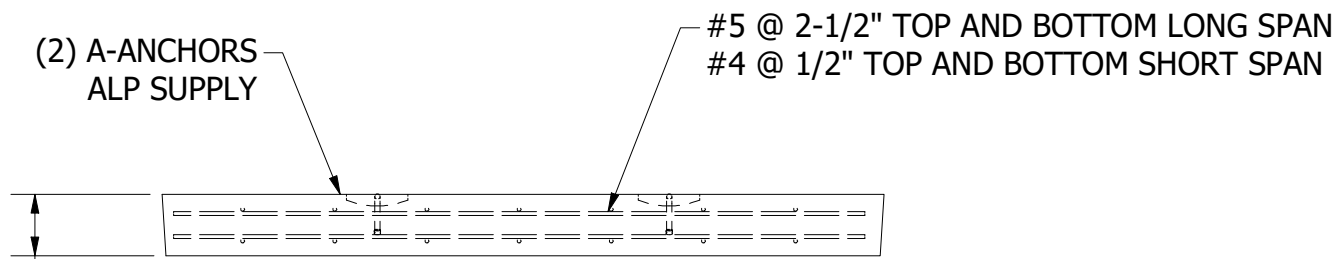
THE CONTENTS OF THESE DRAWINGS ARE THE PROPERTY OF PRECON PRODUCTS AND ARE PROPRIETARY AND CONFIDENTIAL. THESE DOCUMENTS SHALL NOT BE DISSEMINATED FOR ANY OTHER USE, WITHOUT THE WRITTEN CONSENT OF PRECON PRODUCTS. IF YOU RECEIVE THESE DRAWINGS IN ERROR, RETURN TO SENDER WITHOUT READING, COPYING OR DISCLOSURING THE CONTENTS.

DO NOT SCALE

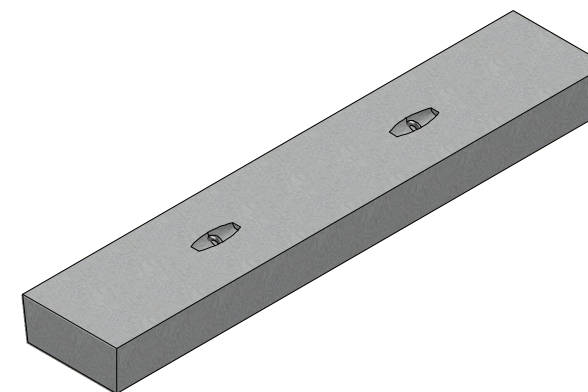
PRECON
240 W. LOS ANGELES AVE.
SIMI VALLEY, CA 93065
P: (805) 527-0841
WWW.PRE-CONPRODUCTS.COM



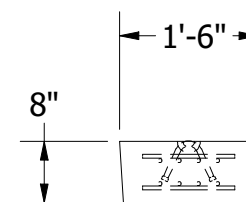
PLAN VIEW



PROFILE VIEW



ISOMETRIC VIEW



END VIEW

TITLE:
**18" Wide x 8" Thick x 94" Long
Bess Foundations**

DRAWN BY:
K.Strader

DATE:
6/2/2023

SHEET:
1 OF 1