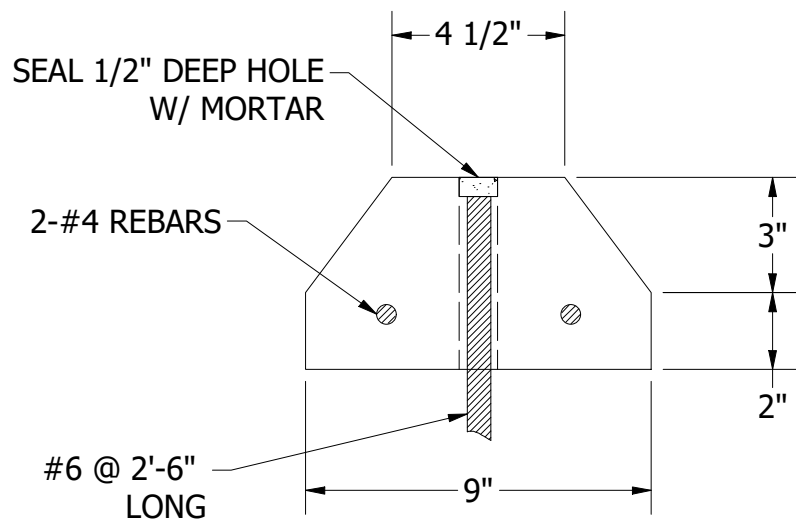
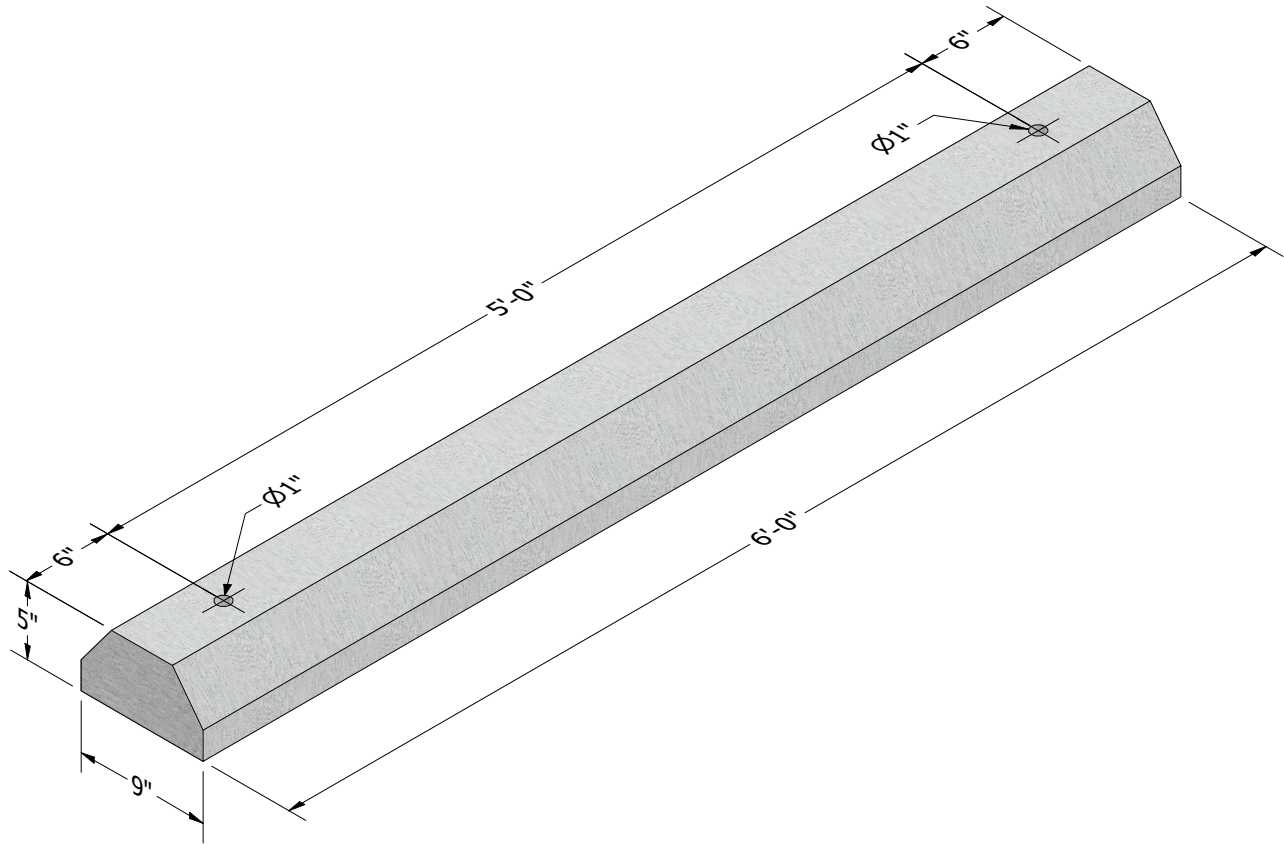


PART INFORMATION	
PART NUMBER	APPROX WEIGHT
WS-6	240 lbs



**NOTES: UNLESS OTHERWISE SPECIFIED.**

1. CONCRETE SHALL HAVE A MINIMUM COMPRESSIVE STRENGTH  $F_c = 4000$  PSI AT 28 DAYS.
2. THE PORTLAND CEMENT USED IN THE PRECAST SECTIONS SHALL MEET THE REQUIREMENTS OF TYPE II/V HIGH SULFATE RESISTANT CEMENT IN ACCORDANCE WITH ASTM C-150.



240 W. LOS ANGELESE AVE. SIMI VALLEY, CA 93065  
 P: (805) 527-0841 F: (805) 584-0769,  
 WWW.PRE-CONPRODUCTS.COM

THE CONTENTS OF THESE DRAWINGS ARE THE PROPERTY OF PRECON PRODUCTS AND ARE PROPRIETARY AND CONFIDENTIAL. THESE DOCUMENTS SHALL NOT BE DISSEMINATED FOR ANY OTHER USE, WITHOUT THE WRITTEN CONSENT OF PRECON PRODUCTS. IF YOU RECEIVE THESE DRAWINGS IN ERROR, RETURN TO SENDER WITHOUT READING, COPYING OR DISCLOSING THE CONTENTS.

DRAWN BY:  
**K.Strader**  
 DATE:  
**1/26/2022**

TITLE:  
**PRECAST CONCRETE  
 WHEEL STOP 6'-0"**

SHEETS:  
**1 OF 1**  
 DO NOT SCALE

LOCATION: T:\Drawings\Vault\DESIGN\5\VEZ\PreCast Concrete Wheel Stop\Concrete Wheel Stop-6.dwg