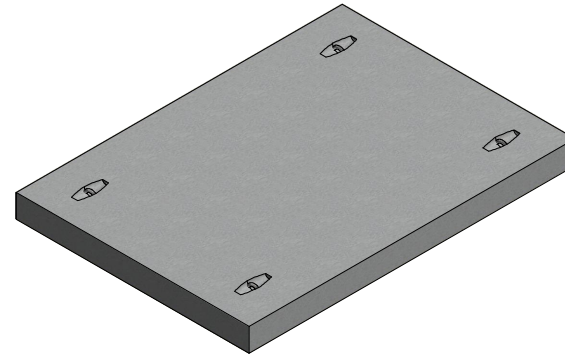
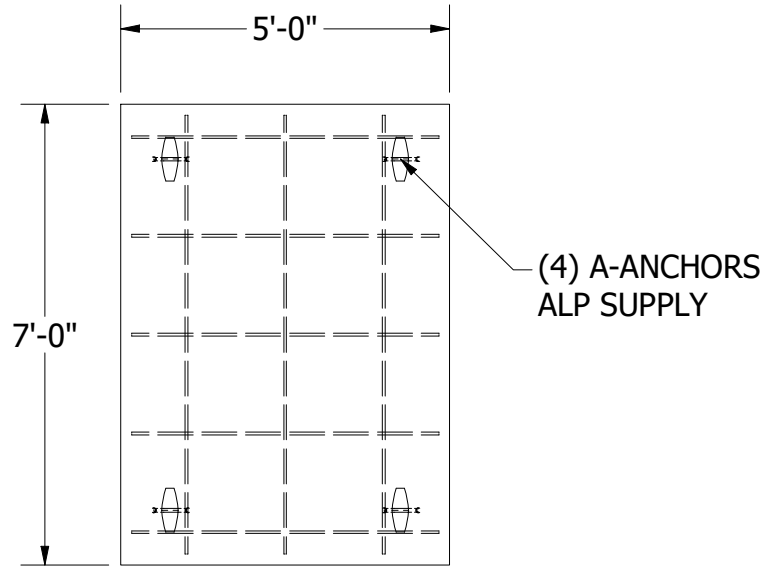


LOCATION: T:\Drawings\Vault\DESIGNS\Foundation\Customer\B2luco\60x 84 Concrete Pad Blank.dwg

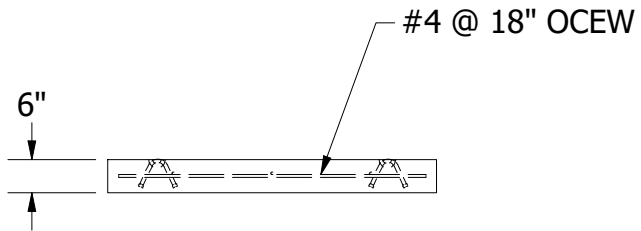
PART INFORMATION		
DESCRIPTION	QTY	APPROX. WEIGHT IN LBS
CP-60x84-Blank	1	2,630

**NOTES: UNLESS OTHERWISE SPECIFIED**

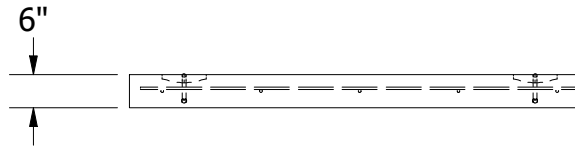
1. CONCRETE SHALL HAVE A MINIMUM COMPRESSIVE STRENGTH  $F_c=5000$  PSI AT 28 DAYS.
2. THE PORTLAND CEMENT USED IN THE PRECAST SECTIONS SHALL MEET THE REQUIREMENTS OF TYPE II/V HIGH SULFATE RESISTANCE CEMENT IN ACCORDANCE WITH ASTM C-150.



PLAN VIEW



PROFILE VIEW



END VIEW

REVISIONS:	No.	DATE	DESCRIPTION

THE CONTENTS OF THESE DRAWINGS ARE THE PROPERTY OF PRECON PRODUCTS AND CONFIDENTIAL. THESE DOCUMENTS SHALL NOT BE DISSEMINATED FOR ANY OTHER USE WITHOUT THE WRITTEN PERMISSION OF PRECON PRODUCTS. IN THE EVENT OF ANY DISCREPANCY OR ERROR, RETURN TO SENDER WITHOUT READING, COPYING OR DISCLOSING THE CONTENTS.

DO NOT SCALE

240 W. LOS ANGELES AVE.  
SIMI VALLEY, CA 93065  
P: (805) 527-0841 F: (805) 584-0769  
WWW.PRE-CONPRODUCTS.COM

TITLE: **60"x 84" CONCRETE PAD**

DRAWN BY: **W.TACK**

DATE: **7/3/2023**

SHEET: **1 OF 1**

REV. 02 7.03.23