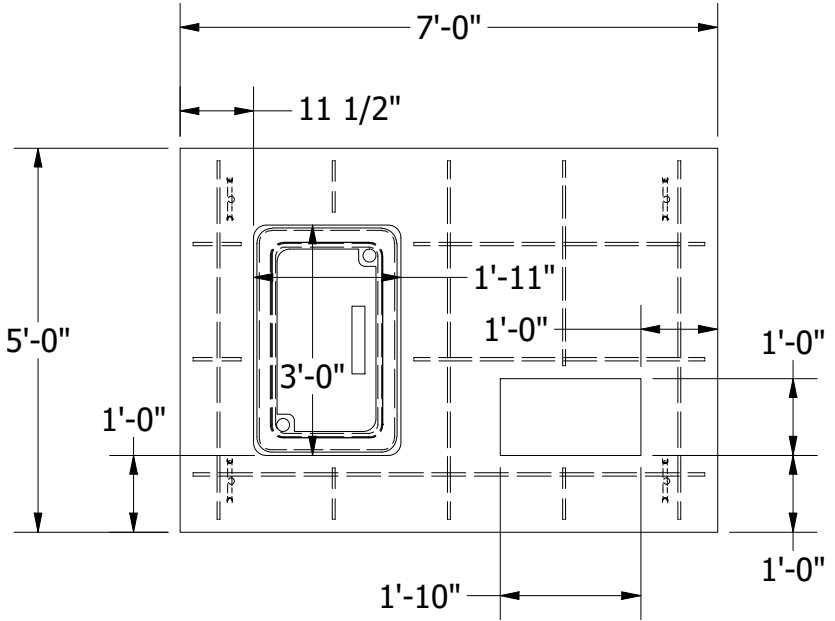


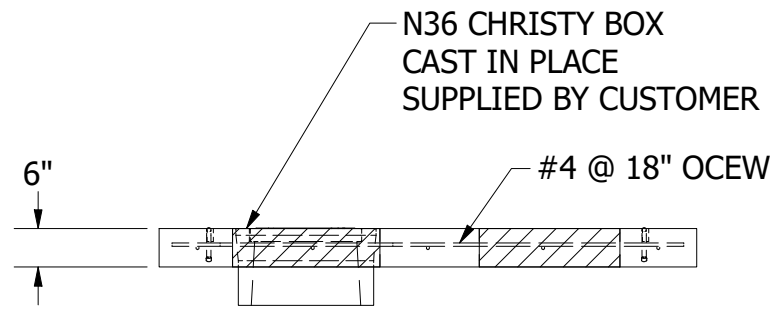
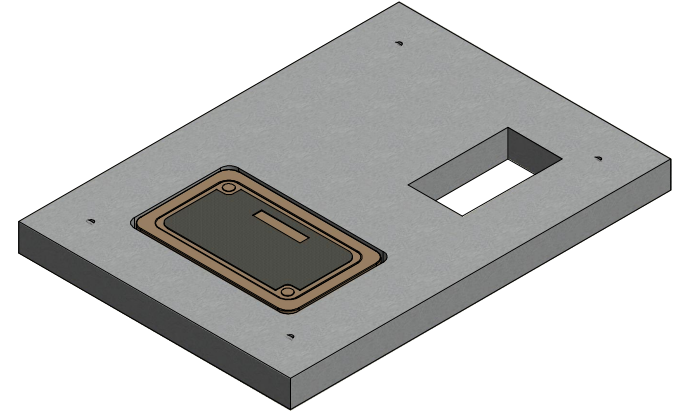
LOCATION: T:\Drawings\Vault\DESIGNS\Foundation\Customer\B2luco\60x 84 Concrete Pad With Christy Box.dwg

PART INFORMATION		
DESCRIPTION	QTY	APPROX. WEIGHT IN LBS
CP-60x84-L	6	2,050
N36 CHRISTY BOX AND COVER	6	N/A

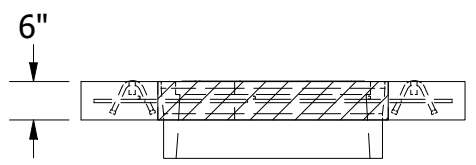
**NOTES: UNLESS OTHER WISE SPECIFIED**  
 1. CONCRETE SHALL HAVE A MINIMUM COMPRESSIVE STRENGTH Fc=5000 PSI AT 28 DAYS.  
 2. THE PORTLAND CEMENT USED IN THE PRECAST SECTIONS SHALL MEET THE REQUIREMENTS OF TYPE II/V HIGH SULFATE RESISTANCE CEMENT IN ACCORDANCE WITH ASTM C-150.



PLAN VIEW



PROFILE VIEW



END VIEW

REV. 02 7.03.23

REVISIONS:	No.	DATE	DESCRIPTION

THE CONTENTS OF THESE DRAWINGS ARE THE PROPERTY OF PRECON AND CONFIDENTIAL. THESE DOCUMENTS SHALL NOT BE DISSEMINATED FOR ANY OTHER USE, WITHOUT THE WRITTEN PERMISSION OF PRECON PRODUCTS. IN THE EVENT OF ANY DISCREPANCY, ERROR, RETURN TO SENDER WITHOUT READING, COPYING OR DISCLOSING THE CONTENTS.

DO NOT SCALE

240 W. LOS ANGELES AVE.  
 SIMI VALLEY, CA 93065  
 P: (805) 527-0841 F: (805) 584-0769  
 WWW.PRE-CONPRODUCTS.COM

TITLE: **60"x 84" CONCRETE PAD LEFT**

DRAWN BY: **W.TACK**

DATE: **7/3/2023**

SHEET: **1 OF 1**