

NOTES:

1. CONCRETE DESIGNED IN ACCORDANCE WITH L.A.D.W.P. SPEC. P178-R8, ACI 318, AND ASTM C857. 5,000 PSI CONCRETE AT 28 DAYS. MIX DESIGN# RRM23142
2. GRADE 60 STEEL REINFORCING.
3. COVERS SHALL BE PROVIDED WITH NON-CORROSIVE FASTENING DEVICE ON THE CENTER LINE OF EACH SIDE (4 SIDES) SUCH THAT A TOOL SHALL BE REQUIRED FOR ITS REMOVAL. COVER SHALL BE HOT DIP GALVANIZED. COVERS AND BOLTS SHALL BE FLUSH WITH CONCRETE SURFACE. THE FRONT COVER SHALL BE GALVANIZED AFTER LADWP LOGO IS BEAD WELDED IN PLACE, IF APPLICABLE. PROVIDE 1#2" OPEN END STAR P35T INSERTS WITH THROUGH HOLE OR CLEAN OUT FOR EACH BOLT.
4. MINIMUM DESIGN: LOADING FOR PAD SLAB SHALL BE
LIVE LOAD = 100 LBS/SQ. FT.
DEAD LOAD = 1600 LBS/SQ. FT.
IMPACT = NONE
LATERAL EARTH PRESSURE (SATURATED) = 80PCF
5. ALL UNISTRUTS SHALL BE HOT DIP GALVANIZED CONTINUOUS CONCRETE INSERTS AND SHALL BE FLUSH WITH CONCRETE SURFACE.
6. BACKFILL WITH NATURAL MATERIAL AND PERFORM 90% COMPACTION. AS AN ALTERNATIVE BACKFILL WITH SLURRY-CEMENT CLASS 100-E-100 BACKFILL. BACKFILL UNDER OVERHANG SHALL ONLY BE SLURRY-CEMENT.
7. PAD SHALL BE SET ON 6" COMPACTED CRUSHED ROCK 1", GRADE A OR CONCRETE AGGREGATE #3, GRADE B (SSPWC, SUBSECTIONS 200-1.2 & 200-1.4) UNLESS OTHERWISE APPROVED BY THE DEPARTMENT REPRESENTATIVE.
8. END-USERS AND CONTRACTOR: A WORK PERMIT MUST BE OBTAINED BEFORE THE START OF ANY CONSTRUCTION.
9. BATCH INSPECTION AND FIELD INSPECTION REQUIRED FOR ALL FRAMES AND COVERS.
10. EACH CONCRETE SECTION SHALL BE MARKED ON THE INSIDE & OUTSIDE WITH COMPANY NAME AND THE DESIGNATION "DWP-FA-CN" OR "DWP/F-CN-SC" IF SCC MIX USED AND THE DATE OF POUR.
11. VAULT SHALL BE SET ON 6" COMPACTED CRUSHED ROCK 1", GRADE A OR CONCRETE AGGREGATE #3, GRADE B (SSPWC, SUBSECTIONS 200-1.2 & 200-1.4)
12. ALL TERMINATORS SUPPLIED WITH SCH 40 PVC CAPPED AT OUTSIDE WALL.

NOTES cont.:

13. DESIGN LOADS NOT INCLUDED IN DESIGN:
 - 13.1 COOPER E-80 LOADING
 - 13.2 OTHER LATERAL OR SURCHARGE LOAD PRODUCED BY ADJACENT SLOPED HILL, CUMULATED SOIL PILE OR PARKED HEAVY EQUIPMENT.
 - 13.3 FOOTING, FOUNDATION OR RETAINING SUPPORT OF ADJACENT BUILDING, STRUCTURE AND/OR OTHER STRUCTURAL ELEMENT UNLESS SIGNED BY THE ENGINEER OR RECORD AND APPROVED BY CITY ENGINEER. THE SUBSTRUCTURE SHALL BE KEPT AT LEAST IN A 1:1 RATIO AWAY FROM ALL THE LOADS, THE FOOTING, AND FOUNDATIONS OR RETAINING SUPPORT.

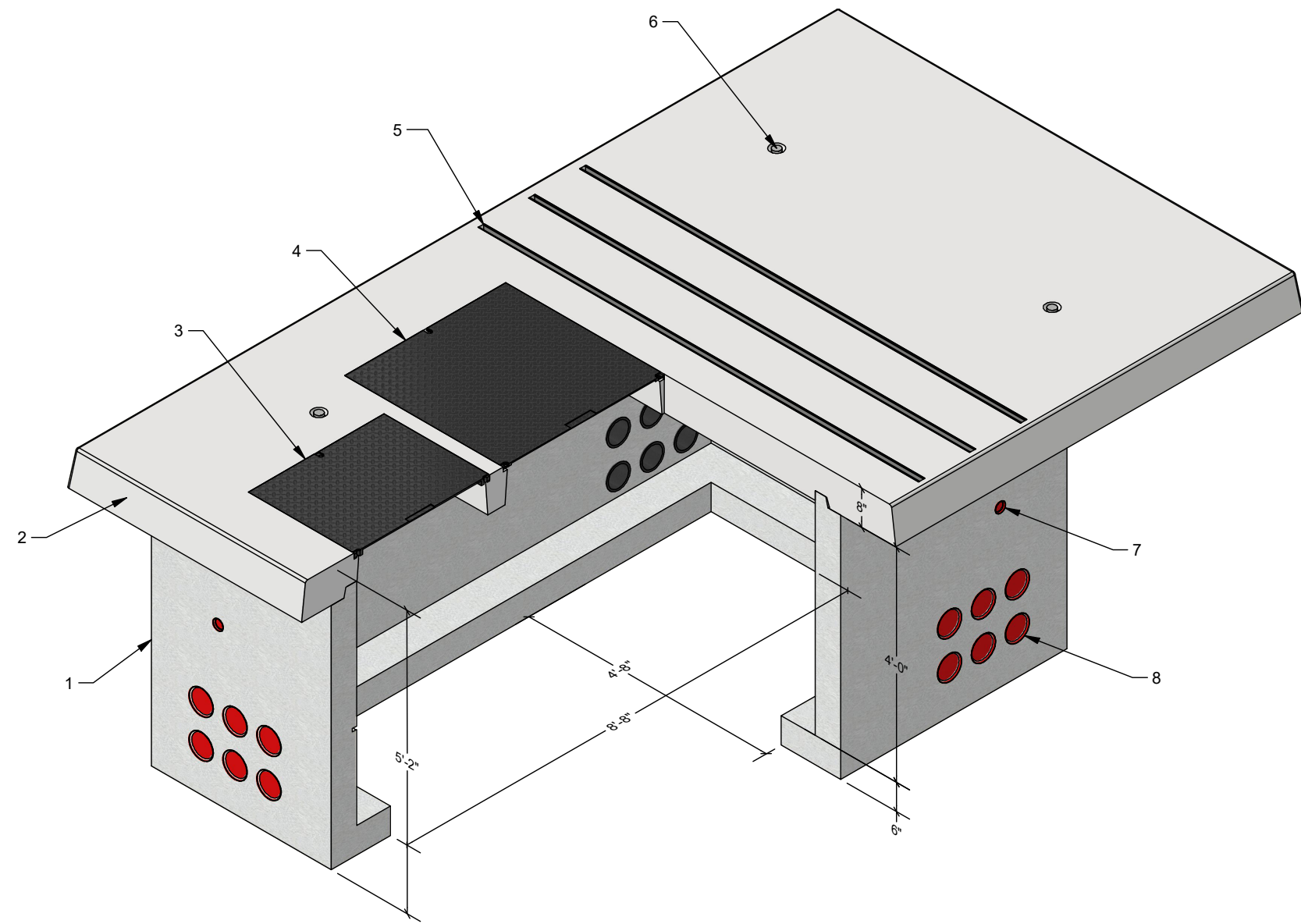
MATERIALS LIST			
ITEM	QTY	DESCRIPTION	WEIGHT
1	1	PB60100-48 BASE	10,550 LBS
2	1	P108180 PAD	9,075 LBS
3	1	30x48 PARKWAY 3/16" DIAMOND PLATE COVER GALV. "LADPW-E"	150 LBS
4	1	36x72 PARKWAY 3/16" DIAMOND PLATE COVER GALV. "LADPW-E"	200 LBS
5	3	1-5/8"x 1-5/8"x 104" LONG 12 GAUGE STRUT (UNISTRUT P3200 SERIES)	N/A
6	8	GALV DR ANCHORS FOR LIFTING	N/A
7	8	2" DIA TERMINATORS WITH MEMBRANE	N/A
8	50	5" DIA TERMINATORS WITH MEMBRANE	N/A

THE CONTENTS OF THESE DRAWINGS ARE THE PROPERTY OF PRECON PRODUCTS AND ARE PROPRIETARY AND CONFIDENTIAL. THESE DOCUMENTS SHALL NOT BE DISSEMINATED FOR ANY OTHER USE, WITHOUT THE WRITTEN CONSENT OF PRECON PRODUCTS. IF YOU RECEIVE THESE DRAWINGS IN ERROR, RETURN TO SENDER WITHOUT READING, COPYING OR DISCLOSING THE CONTENTS.



DO NOT SCALE

PRECON
 240 W. LOS ANGELES AVE.
 SIMI VALLEY, CA 93065
 P: (805) 527-0841
 F: (805) 584-0769,
 WWW.PRE-CONPRODUCTS.COM



TITLE:
**LADWP
 9'-0" x 15'-0" PAD,
 6'-0" x 10'-0" x 4'-0" VAULT**

DRAWN BY:
K.Strader
 DATE:
10/13/2023
 SHEET:
2 OF 7

REV.01 12.01.23 KS